

# PRODUCT SUMMARY



When every dollar counts...



...count on AutomationDirect!



Over 35,000 quality industrial control products at great everyday prices are available on our webstore 24/7/365, and each one comes with the FREE customer service you deserve.

**AUTOMATIONDIRECT**.com  
www.AutomationDirect.com 1-800-633-0405  
**The #1 Value in Automation**

AcuAmp, Atlas, Automation Notebook, Automation Direct, Automationdirect.com, Click, C-more, DINnectors, Direct LOGIC, Direct SOFT, Do-more, Durapulse, Gladiator, Hydromode, IronHorse, Konnect-It, NITRA, PLC-Direct, Productivity, ProSense, Protos X, Rhino, Screen Creator, Solo, Stellar, Stratus, Stride, SureGear, SureMotion, SureServo, SureServo2, SureStep, ViewMarq, and ZIPPort, Pocket Portal, StrideLinx, Sureframe are registered trademarks of Automationdirect.com (doing business as AutomationDirect). Other pending and unregistered marks of AutomationDirect also appear throughout this catalog. This publication is based on information that was available at the time it was printed. At AutomationDirect, we constantly strive to improve our products and services, so we reserve the right to make changes to our products, terms and conditions and/or publications at any time without notice and without any obligation. This publication may also discuss features that may not be available in certain revisions of the product. AutomationDirect makes no representation or warranty, expressed, implied, or statutory with respect to the information in this catalog. Our terms and conditions of sale, as in effect at the time of printing, may be found on the following pages. Our standard terms and conditions in effect at the time an order is accepted (including as to limited warranties and limitations of liability) apply to all purchases. We do not accept any deviations from those terms. If any additional or different terms or conditions are included in your order, we may choose to fulfill your order, but the additional or different terms and conditions will not apply or be deemed accepted by us. This publication contains many specifications, wiring diagrams, and other types of information related to the various product offerings. However, under no circumstances should you use this document for installation, operation, or troubleshooting of any equipment. Always consult the appropriate product documentation prior to using the equipment. If you have any questions concerning the installation or operation of this equipment, or if you need additional information, please call for assistance.

Copyright © August 2023, Automationdirect.com Incorporated Encompassing PLCDirect.

All Rights Reserved.

No part of this publication may be copied, reproduced, or transmitted in any way without the prior, written consent of Automationdirect.com Incorporated.

These Terms and Conditions supercede all previous publications' Terms and Conditions.

- Buy direct and save
- Everyday low prices
- Rated tops in customer service year after year [www.automationdirect.com/reviews](http://www.automationdirect.com/reviews)
- With huge inventory your order ships fast!
- Tens of thousands of products!

**Complete up-to-date price list is always available online.**

- Find products, search, print or e-mail
- Click on part numbers to link directly to our online store for pricing, specs, up-to-the-minute stocking information and more



Download your copy: [www.automationdirect.com/pricelist](http://www.automationdirect.com/pricelist)

**Online catalogs with pricing**

Our complete catalogs, with current pricing, are online in PDF format. PDFs have easy-to-use features such as search, direct links to online store by part number, easy navigation and much more. Save most referenced sections to your mobile device or computer.



Check out all product catalogs: [www.automationdirect.com/PDFcatalog](http://www.automationdirect.com/PDFcatalog)



While our most up-to-date information is always online 24/7, some people still prefer to have a copy locally.

If you'd like a copy of our latest catalogs, they are available on USB electronic media.

Request your FREE USB catalog [www.automationdirect.com/USBcatalog](http://www.automationdirect.com/USBcatalog)

**Contacts**

**fax: 1-770-889-7876**

**phone: 1-800-633-0405 or 1-770-889-2858**

Monday - Friday 9 a.m. - 6 p.m. ET

**mail: AutomationDirect**  
3505 Hutchinson Road  
Cumming, GA 30040

**Technical Support**

**fax: 1-770-886-3199**

**phone: 1-770-844-4200**

**What makes us the #1 Value in Automation?**

In addition to great products with great pricing, you get:

- FREE Technical Support
- FREE FAST Shipping of in-stock products on orders over \$49\*\*
- FREE Product Manuals (download)
- FREE software (download) for most products
- 45-day money-back guarantee on most products

\*\* See Terms and Conditions or our Web site for details

# The common sense way to buy industrial controls®



[www.AutomationDirect.com](http://www.AutomationDirect.com)

**Quality Products** [www.automationdirect.com](http://www.automationdirect.com)

download PDF **Great Prices** [www.automationdirect.com/pricelist](http://www.automationdirect.com/pricelist)

**Helpful Online Resources** [www.automationdirect.com/videos](http://www.automationdirect.com/videos)

**Solid Company** [www.automationdirect.com/info](http://www.automationdirect.com/info)

**#1 Voted Service** [www.automationdirect.com/service](http://www.automationdirect.com/service)

**Satisfied Customers** [www.automationdirect.com/reviews](http://www.automationdirect.com/reviews)

AutomationDirect.com has been a leader in providing affordable, quality industrial control products to the U.S. and Canada for more than two decades.

As a privately-held efficiently run company, we take pride in serving our customers the way they want to be served - honestly and fairly. We do everything we can to accomplish this day in and day out.

- Honest up front pricing (no gimmicks)
- Quick delivery - order today, it ships fast!
- FREE shipping on orders over \$49
- Our technical support team provides superior assistance and has consistently received high ratings from satisfied customers. And it won't cost you a cent!



AutomationDirect.com HQ campus and warehouses



Our campus is located about 45 minutes north of Atlanta, GA, USA. *We're all here* - our sales and technical support teams, purchasing, accounting, and of course our multiple huge warehouses and speedy logistics team.

# AutomationDirect: much more than just a ".com"

AutomationDirect is a non-traditional industrial controls company using the best ideas from the consumer world to serve your automation needs. We deliver quality products fast for much less than traditional suppliers. See below . . .

You need quality products at great prices.



For over 25 years, we've been offering a better value on industrial controls by running our direct business efficiently and passing the savings on to you. No complex pricing structures or penalty for small orders, just low everyday prices on everything from fuses to motors.

Programming software for products can be costly, so we help you out by offering FREE software for our most popular products, including all our latest PLC families and C-more HMI. No license or upgrade fees to deal with!

[www.AutomationDirect.com/price](http://www.AutomationDirect.com/price)



You want complete product information to make the right purchase decision.



Whether you're deciding on purchasing our products or learning our products after you buy, why jump through hoops or even pay for the information you need? That doesn't make sense.

We have exhaustive documentation, including overviews, technical specifications, manuals and CAD drawings online, and it's all free to access with no limitations.

We have over 1,000 videos online to get you up to speed quickly. When shopping online, if a product you're looking at has video, it will be available right there for you to view.

We even provide FREE online PLC training to anyone interested in learning about industrial controls.

[www.AutomationDirect.com/plc-training](http://www.AutomationDirect.com/plc-training)



You don't want to wait for your order.

We have fast shipping, and it's FREE if your order is over \$49.\*

At AutomationDirect, we strive to have what you need, when you need it. We've invested heavily into infrastructure, inventory, and warehouse automation so that we can continue to provide you with quality products, at great prices, extremely fast!

(Certain items may have early order deadlines, see Webstore for details by part).

\*Order over \$49, and get free shipping with delivery in 2 business days (or less) within the U.S. (Certain delivery time or shipping cost exceptions may apply; see Terms and Conditions online for complete details. <http://go2adc.com/terms>)



You want to be confident in our products and our commitment to you.

We stand behind our products and guarantee your satisfaction.

We want you to be pleased with every order. That's why we offer a 45-day money-back guarantee on almost every stock product we sell. (See Terms and Conditions online for exclusions.)



You insist on getting better service and you want it FREE.

We consistently receive top reviews from our long time and new customers. We feel serving our customers is our top priority and it's never been just a slogan or catchphrase for us. Selling a great product at a great price with excellent customer service is just common sense.

See for yourself, and check out our company reviews. Real reviews from real customers . . . and we don't edit out the bad ones. We're not 100% perfect but we can certainly aim for it!

[www.AutomationDirect.com/reviews](http://www.AutomationDirect.com/reviews)



This ".com" is powered by "awesomepeople"!

Our primary focus has always been customer service — practical products, great prices, fast delivery, and helpful assistance. But the intangible value of customer service is something that cannot be faked, automated or glossed over.

Our team members here at AutomationDirect.com approach every day with one goal in mind - serve the customer. If the answer to any decision is "Yes, this is good for our customers", then we do it, whether personally or via self-serve features on our site.



Easy access to account and order history, online returns



Upfront pricing and realtime stock availability

"Should we have real upfront pricing online and realtime stock availability? Yes, this is good for our customers."

"Should we have FREE tech support before, during, and after any sale instead of charging yearly fees for tech support? Yes, this is good for our customers."

"Should we offer FREE software on many products instead of charging licensing fees? Yes, this is good for our customers."

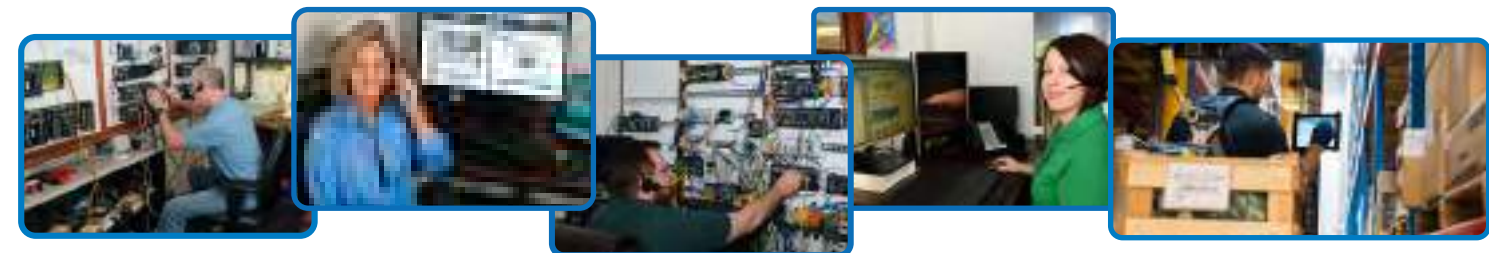
"Should we have all our documentation online for FREE so people can access anytime, even before they choose to purchase? Yes, this is good for our customers."

"Should we offer more selection by consistently introducing more new quality products almost continually? Yes, this is good for our customers."

"Should we offer FREE shipping for orders over \$49? Yes, this is good for our customers."

All these are discussions we've had internally and all have made us wonder "can we do that?", "that will be hard to accomplish", "no one else is doing that, how can we?". But if you bring it back to the simple answer, "Yes, this is good for our customers", then the perceived obstacles really don't matter.

Our company has evolved dramatically since 1994, and it's this type of decision making by all our team members over the years that keeps our customers coming back and new customers checking us out daily.



Check us out at: [www.automationdirect.com](http://www.automationdirect.com)

Great Prices [www.automationdirect.com/pricelist](http://www.automationdirect.com/pricelist)

# If it's in your cabinet, it's online at [www.AutomationDirect.com](http://www.AutomationDirect.com) FOR LESS!

Wire 500 ft. Spools	AutomationDirect Price/Part Number
Type MTW 18AWG blue	\$73.00/MTW18BL
Type MTW 16AWG red	\$84.00/MTW16RD
Type MTW 14AWG red	\$146.00/MTW14RD
Type MTW 12AWG blue	\$200.00/MTW12BK
Type TFFN 18AWG black	\$66.00/TFFN18BK
Type TFFN 16AWG red	\$57.00/TFFN16RD
Type THHN 14AWG white	\$114.00/THHN14WH
Type THHN 10AWG black	\$259.00/THHN10BK

All prices are U.S. published prices. AutomationDirect prices as of 04/19/2023.

CLICK PLC	AutomationDirect Price/Part Number
PLC CPU with 8 DC inputs / 6 DC outputs (sinking), two communication ports	\$92.00 C0-00DD1-D
PLC CPU with 8 DC inputs / 8 DC outputs (sinking), 1 Ethernet 10/100 Mbps comm port, 1 RS-232 comm port, battery backup, real-time clock	\$183.00 C0-10DD1E-D
PLC CPU with 4 DC inputs / 4 DC outputs (sinking), 2 analog inputs / 2 analog outputs, three communication ports, real-time clock	\$192.00 C0-02DD1-D
Auxiliary power supply (0.5A), 100-240 VAC input, 24 VDC 0.5A output	\$51.00 C0-00AC
AC input module, eight 100-120 VAC points	\$57.00 C0-08NA

AutomationDirect prices as of 6/21/2023. Prices subject to change without notice.

Safety Devices	AutomationDirect Price/Part Number
Datalogic safety light curtain, sender/receiver pair, hand protection, 24 VDC, 30mm resolution, 300mm protected height, 0.2-20m operating distance, safety category Type 4, IP65.	\$628.00 SG4-30-030-00-E (sender/receiver)
Safety limit switch, pull-reset action, plunger actuator, 30mm plastic body, 1/2 NPT	\$15.50 AP2R11X11
Safety relay module, single channel, for E-stop circuits, 24 VDC, 2 N.O. contacts	\$121.00 LG5924-02-61-24

All prices are U.S. published prices. AutomationDirect prices as of 12/07/2022. Prices subject to change without notice.

CPU Comparison	AutomationDirect P1-540	AutomationDirect P1-550
Total Memory	50MB	50MB
Built-in USB Programming Port	✓	✓
Built-in Serial Ports (RS-232 & RS-485)	2	2
Built-in Ethernet Ports (RJ45)	1	2
EtherNet/IP, MQTT, Modbus RTU/TCP Protocols	✓	✓
Remote Expansion Support	---	✓
Max Local I/O Capacity	240	240
Max Expansion I/O Capacity	---	512
PS-AMC support - Coordinated Motion	---	✓
Integrated GS Drive/ Protos X Field I/O Support	---	✓
Data Port (data logging)	✓	✓
Price	\$237.00	\$268.00

## AutomationDirect: Shopping the world to bring you the most practical products in the industry, in-stock, ready to ship and at the right prices.

"They seem to have culled down all the products in the world to a useful set that are properly priced, yet no junk. And they can offer their own support for most of them, not shuffle me off to the manufacturer. Many people have started using them based on my recommendation, and they thank me."

- Chris in Kettering, Ohio

"Your company is exactly what I was looking for. Detailed specs are a must when working with automation products, and I have not needed to ask any questions as all the information is already on the site. Lightning fast shipping has been great, and when I make future orders I will not think twice about availability; again right there on the site. Keep up the great work! You are truly making it a pleasurable experience to shop online."

- Dan in Akron, OH

"As an automation integrator, AutomationDirect is usually my first stop when starting a new design or developing a proposal. Their Web site has all of the specifications and information needed when trying to come up with solutions for easy and difficult design challenges.

Another great advantage to my business is the ability to get pricing, check availability and place orders after normal business hours (this is the time I can work without interruption). Keep up the great work!"

- Jay in Collegeville, PA

### So why are our prices so low?

AutomationDirect offers tens of thousands of high-quality industrial automation products, both name brand and private-labeled. We get great prices from our suppliers because of our volume purchases, so that means we can offer very attractive prices on everything from programmable controllers to terminal blocks.

Instead of paying salespeople, we invest in offering the most comprehensive information at your fingertips, from detailed product specs to educational content and videos.

We offer the ease and speed of online ordering and account access 24/7, but if you need personal assistance, we are just a phone call away for everything from product selection assistance to ordering and easy returns.

### We're adding products all the time

We're adding products continuously, choosing the best-in-class for features, price and quality. Our name-brand products come from companies such as Fuji Electric, Eaton, WEG, and Saginaw. These are multi-billion dollar companies that build world-class quality products often sold through other automation companies as well.

We also offer private-labeled products for even more savings. The manufacturers of these products are often building products for other leading automation companies and large consumer companies. We co-engineer many of these products with the manufacturer to ensure our customers are getting the features they ask for and ship all in-stock products quickly and efficiently on a daily basis.

Ethernet Switches	AutomationDirect STRIDE Price/Part Number
5-port unmanaged Ethernet switch with (5) 10/100BaseT RJ45 Ethernet ports	\$139.00 SE-SW5U
8-port unmanaged Ethernet switch with (8) 10/100BaseT RJ45 Ethernet ports	\$257.00 SE-SW8U
5-port managed Ethernet switch with (5) 10/100BaseT RJ45 Ethernet ports	\$569.00 SE-SW5M
16-port managed Ethernet switch with (16) 10/100BaseT RJ45 Ethernet ports	\$1,399.00 SE-SW16M

All prices are U.S. published prices. AutomationDirect prices as of 04/19/2023. Prices and specifications may vary by dealer and configuration. Prices subject to change without notice.

Stepper Systems	AutomationDirect	US Competition
A Complete 2-axis SureStep® Stepping System* for less than just the competition's stepping drives.	<b>Ours includes:</b> • Two Microstepping Drives (STP-DRV-6575) • Two Stepper Motors (STP-MTR-23079) • One Power Supply (STP-PWR-3204) • Two Extension Cables (STP-EXT-020) \$511.00 Complete 2-axis system SureStep® NEMA 23 System Long Stack	\$880.00 (w/ E-DC For 2 Drives)
	<small>All prices are U.S. published prices. AutomationDirect prices as of 12/07/2022. Parker prices are from <a href="http://buy.compmotor.com">http://buy.compmotor.com</a> 11/5/2020. * All components sold separately.</small>	

# Decades of affordable innovations have made us the #1 VALUE IN AUTOMATION!

We opened our doors in 1994 and from day one our focus has been providing you with quality products, great prices and outstanding service.

**Affordable Innovation?**  
What the heck is that?

Sometimes a better way of doing something isn't just one added product feature or a short term price discount. It's a combination of several product enhancements, better long term prices and service capabilities that are out of the norm for our industry. We're always up for a challenge!

**1994**

- 1st Direct Seller of PLCs**  
"You can't sell PLCs from a catalog, nobody does that?!" **WE DID.**  
Shorter path between product and purchaser means less markup.
- 1st Windows-based programming package for small PLCs**  
"Where's the command line?"  
To help make PLC users' programming task easier, we developed software that was easier to use.
- DirectLOGIC (DL) PLC line is introduced.**  
Our company turns a profit in the fourth month of operations, making us a viable alternative in the industrial controls market.
- We introduce the DL105.**  
With 14 built-in I/O, it is the first brick PLC under \$200 on the market.
- 1st Direct ONLINE Seller of PLCs & Industrial Controls**  
"You can't sell PLCs from a Web site, nobody does that?!" **WE DID and STILL DO.**
- 1st \$99 PLC in the market**  
DL05 brick PLC is introduced with expansion slot at a ground-breaking price.

**2001**

- AutomationDirect is Voted #1 in Service**  
Caught the industry by surprise but not our customers. They've known since day one, we've got their back.  
**And we've gotten top honors for 15 years straight**
- NEW! DL06 PLC supports up to 100 I/O in its small footprint.**
- Leading the way again**  
Our online video library launches
- \$69 PLC**  
CLICK series, our most practical, expandable brick PLC.
- Productivity3000 PLC**  
Featuring a high-performance CPU and advanced control capabilities, it easily becomes one of the best values in the market.
- The Do-more H2 PLC.**
- The Do-more T1H PLC**

**2010**

- Productivity2000 PLC**  
This feature-packed PLC has enhanced capabilities and a slim, even more affordable design!
- BRX family of PLCs and the Productivity1000 PLC**  
Innovative design and value reinterpreted with affordable choices for our customers.
- Productivity® Open UL/CE-certified open-source CPU**  
MAKER IN - INDUSTRIAL OUT  
Industrial-Grade CPU (Arduino-Compatible)
- CLICK PLUS PLC**  
The CLICK PLUS PLC line builds on the simplicity of the original CLICK PLC, providing utmost ease of use with some surprisingly advanced capabilities.
- SureFrame™ T-slotted cut-to-length rails**  
SureFrame cut-to-length aluminum T-slotted rails make constructing a frame or machine easy and quick.  
**NO CUT CHARGES and FREE SHIPPING\***
- LS Electric XGB PLC**  
The LS Electric XGB PLC is a slim modular controller with many motion-specific features built right in and a highly capable IEC based programming environment. These controllers deliver lots of power in a little package.  
**FREE SOFTWARE**

**What's Next?**  
"You can't nobody does that?!"  
**WE WILL...**



# At AutomationDirect.com we have the PLCs you need at the prices you want.



Regardless of your project or system needs, AutomationDirect has a PLC to match your specs and your budget. So whether you're building a simple process or a complex machine, you can count on us for affordable PLCs you can rely on.

## AutomationDirect Federation Partner PLC Families

We've partnered with three well-respected companies in the automation technology field (our "federation partners") to manufacture three of our own PLC product lines in order to meet the demands of the automation market while at the same time guaranteeing the utmost satisfaction.

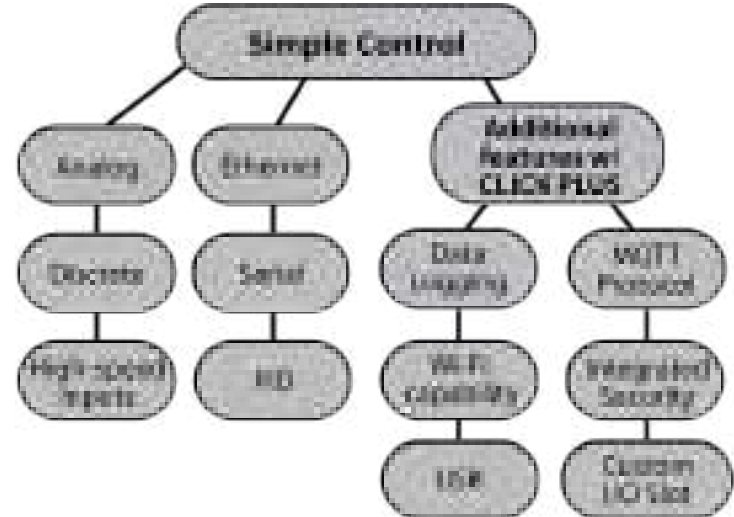
**SIMPLE CONTROL**  
WITH BIG FEATURES  
FOR SMALL  
SYSTEMS



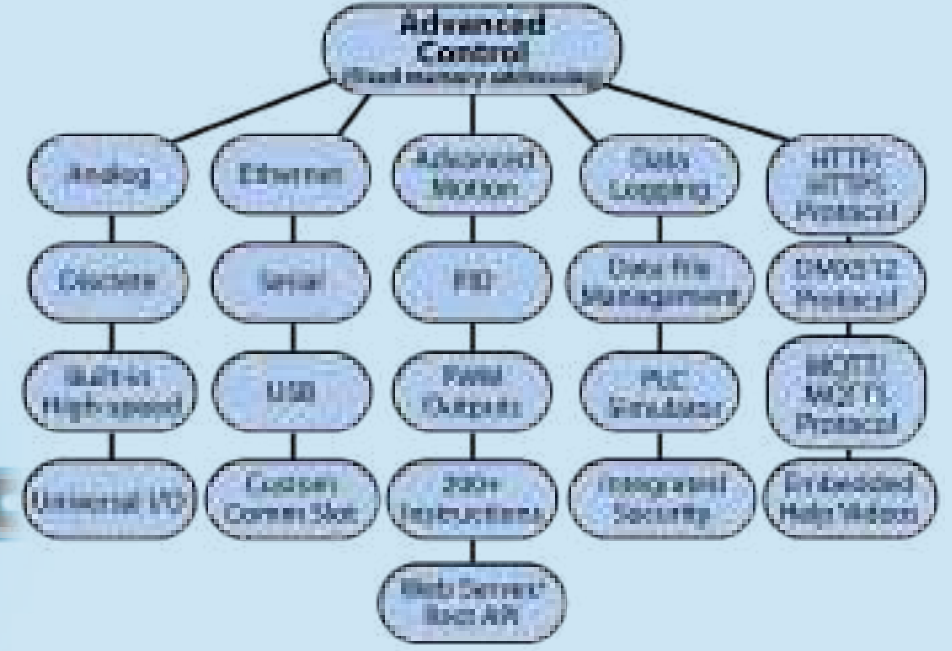
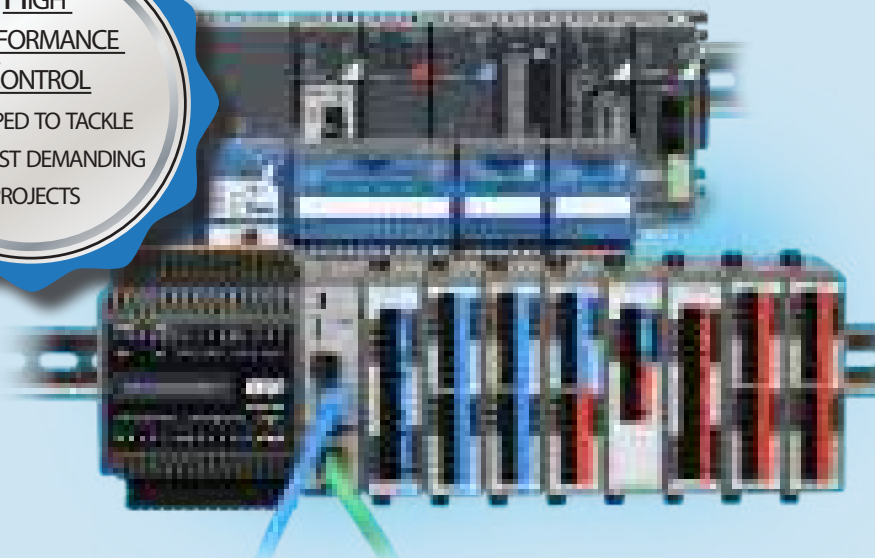



Check latest pricing:  
<https://go2adc.com/CLICKCPU-price>

The CLICK/CLICK PLUS PLC family offers extreme value for everyday applications. The compact size and easy programming make CLICK PLCs great for small applications and beginner projects. The CLICK PLUS series adds modern features to the CLICK PLC line with Wi-Fi capability, data logging and more.



**HIGH PERFORMANCE CONTROL**  
EQUIPPED TO TACKLE THE MOST DEMANDING PROJECTS



Check latest pricing:  
<https://go2adc.com/Do-more-price>

The Do-more PLC family is determined to get it done. This programming powerhouse has one of the most advanced instruction sets in the market and many other features that allow it to stand strong against any challenge.

FREE Downloadable Software  
for many products  
see website for details

Fast Shipping of In-stock Products

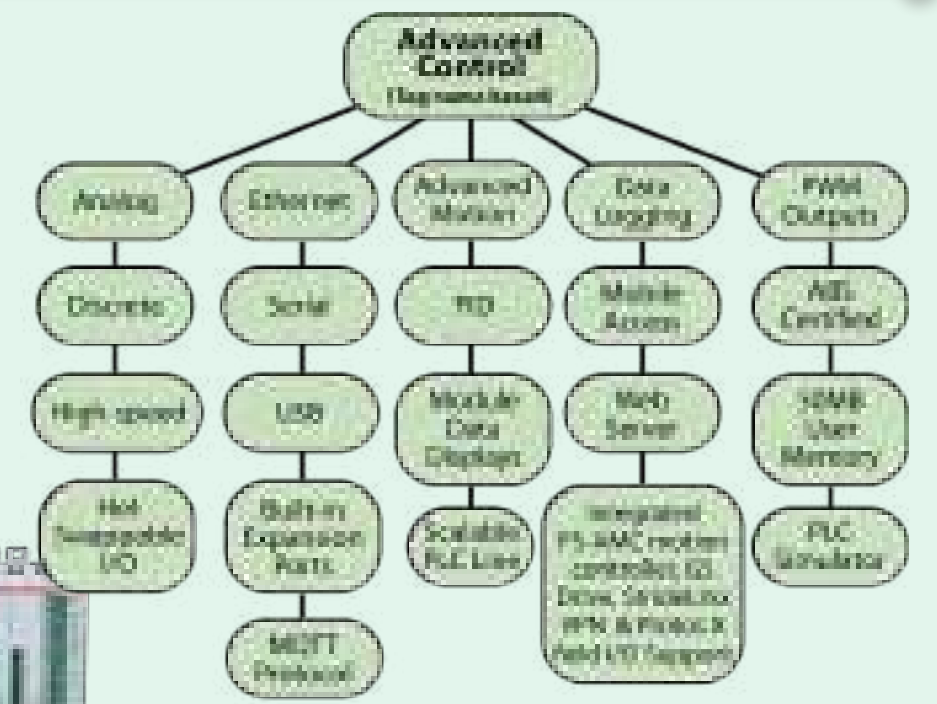
FREE Technical Support  
Located in USA

45-day Money-Back Guarantee

**ADVANCED ALL PURPOSE CONTROL**  
EXTREME VERSATILITY FOR THE WIDEST RANGE OF APPLICATIONS

The Productivity PLC family offers the utmost versatility in both hardware and software. This scalable PLC line will easily conform to large systems with tons of I/O or smaller/segmented systems using limited I/O. With tag name programming, device integration that includes PS-AMC motion controllers, GS drives, Protos X field I/O and others, and a few WOW factors, like analog data displays, Productivity PLCs are a perfect fit for almost any application.

Check latest pricing:  
<https://go2adc.com/Productivity-price>



## XGB PLC from LS Electric

The XGB PLCs are designed and manufactured by LS Electric, a well-established global PLC manufacturer with over 40 years of experience. This PLC family offers advanced controllers geared for motion applications; with high-level features such as IEC programming, they can also be beneficial in any automated system.

Each super compact PLC comes with integrated 2- or 6-axis pulse/direction motion inputs/outputs (up to 200kHz) and includes Ethernet, serial, and USB ports. Use any one of the four PLC units as a stand-alone controller with 32 built-in I/O or add up to 7 expansion modules for up to 244 additional I/O points. Several expansion modules are available to add extra discrete, communication, analog, or motion control capability.

- 4 stackable micro PLC processors with 16 inputs and 16 outputs that include motion capability
- 2-axis and 6-axis versions
- NPN and PNP I/O versions
- 4 high-speed counter inputs, 4 preset inputs
- Ethernet, serial, and USB ports
- Supports up to 7 expansion modules including high-speed counter and EtherNet/IP modules



Check latest pricing:  
<https://go2adc.com/lspic-ps>

The LS XGB PLC is has numerous state-of-the-art features, but two of the more popular are its motion control capabilities and its IEC programming environment.

- Cutting-Edge Motion Control - The LS Electric XGB PLC offers high-level motion control on up to 6 axes with several positioning methods including linear, circular, helical, and ellipse interpolation. Seven homing routines are also available and the FREE software offers a graphical interface so you can see the motion in action!
- Advanced IEC Programming - The FREE XG5000 programming software features several IEC standard PLC languages including structured text and ladder diagram with 700 function blocks available. User defined functions/tags and easy "Excel-like" tag creation make this software extremely versatile.



## Know what you want to do but still not sure which PLC to use? Let us help.

When it comes to deciding which of our PLCs is the one for your application, we want to help. Our online interactive PLC selector tool can help get you on the right path to the right PLC.

Simply choose the type and amount of I/O, the type of communication, and any hardware or software requirements. The tool will then display the suitable PLC families for your selections, along with overview videos, cost comparisons, and feature listings. Look for the "Interactive PLC Selector" button towards the top right of our homepage to get started.

And don't forget, our tech support group is available at 1(800) 633-0405 to answer any questions you may have about the capabilities of our many PLC products.



**GO!** Online PLC selector:  
<http://go2adc.com/select-plc>



# CLICK PLCs are so simple and inexpensive...



Check latest pricing:  
<https://go2adc.com/CLICKCPU-price>



...you'll want to use them everywhere.

## CLICK - The almost free PLC

The CLICK micro-brick PLC is one of the best PLC values in the industry. With basic models starting UNDER \$100 and FREE easy-to-use programming software, CLICK is by far the most practical PLC for the smallest of applications and the perfect tool for beginners.



“Have used this model Click in many small applications, and it has worked, reliably, for many years. We even talked some customers out of using “programmable relays” for they are not as versatile or as cost effective as this PLC.”  
Todd in ONTARIO, CA



## CLICK PLC features:

- Stand-alone PLC units with built-in discrete or discrete/analog I/O
- Expandable with stackable I/O modules up to 142 discrete or 54 analog I/O points total
- Onboard communication (Ethernet and serial options)
- High-speed counter/timer support
- Micro size - approximately 2"(W) x 3"(H) x 3"(D)
- Removable terminal blocks for easy wiring
- Optional battery backup and real time clock/calendar
- FREE programming software with a simple but practical instruction set
- Easy PID for simple process control (Ethernet models only)

Learn more at: [www.CLICKPLCs.com](http://www.CLICKPLCs.com)



## CLICK PLUS PLC features:

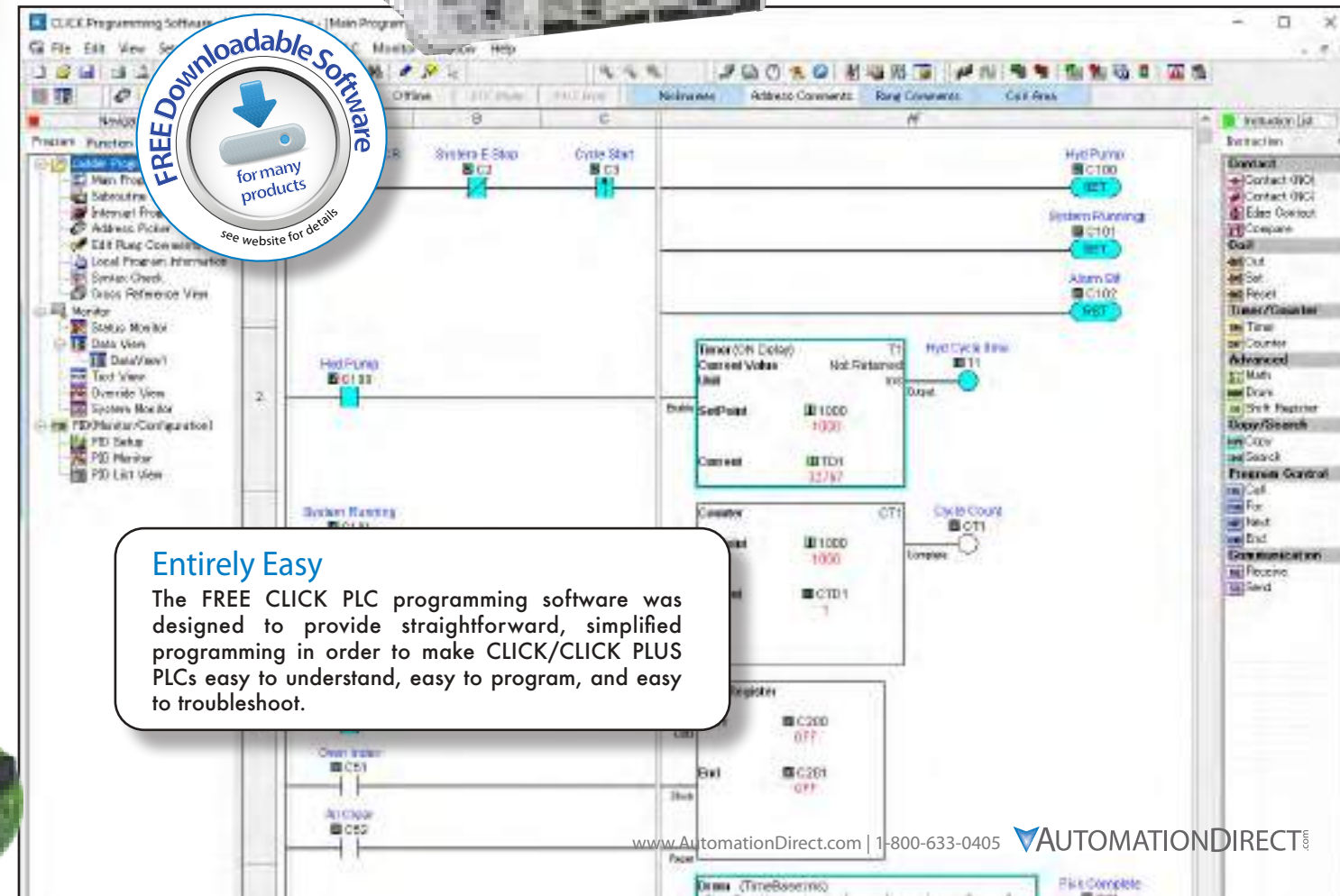
- All the great features of the original CLICK PLC
- Wired and wireless CPU options
- Data logging (microSD support)
- IIoT ready with MQTT protocol
- Modbus RTU, Modbus TCP and EtherNet/IP protocol support
- Wi-Fi with Bluetooth provisioning
- Micro USB programming port
- Option module slot(s) for custom I/O configurations in lieu of fixed I/O
- Enhanced security



Check latest pricing:  
<https://go2adc.com/clk-ps>

Building on the original CLICK's simple design, the new CLICK PLUS PLCs offer the same practical control but with some surprising bells and whistles. Using the same FREE, streamlined PLC programming software as its predecessor, the CLICK PLUS PLCs provide no-headache programming combined with advanced capabilities like Wi-Fi communication and data logging.

With a low starting at price and with its robust, advanced feature set, the CLICK PLUS PLC line is undoubtedly the unmatched value leader!



## Entirely Easy

The FREE CLICK PLC programming software was designed to provide straightforward, simplified programming in order to make CLICK/CLICK PLUS PLCs easy to understand, easy to program, and easy to troubleshoot.

# Most PLCs will do but only some will Do-more!



“The Do-More PLC is one of the best I have worked on in over 15 years. I easily had my program written and tested (using the simulation in the software!) in very little time. The instruction set is one of the best in the market...”  
Garry in TRENTON, ON

**Do-more than ever before.**  
The ground-breaking Do-more! PLC control technology was developed to tackle both straightforward and complex applications in no time. This PLC series is loaded with hardware and software features (including the FREE simulator and Rest API functionality) that provide an extensive toolbox to satisfy even the most demanding projects.

One of the many benefits Do-more PLCs offer is device-centric programming. This programming method allows the user to configure software “devices” that act as liaisons between the ladder code and the hardware itself. For example, easily create a device to handle communication rates, timeouts, etc. all behind the scenes without any extra ladder programming. This feature along with the other efficiencies built into the Do-more platform, and the many tools it provides, will allow you to master any control challenge, big or small.

**GO! FREE Do-more PLC software:**  
<https://go2adc.com/dmsw-ps>

### Full-featured hardware with FREE software that offers:

- Project simulator provides a head start on code verification
- Added efficiency with device-centric programming and easy top-down configurations
- User defined structure data types
- Support for tasks, programs, subroutines, and interrupt service routines (ISRs)
- Embedded video help
- Dashboard for easy navigation
- Complete program, data file and memory management
- Robust instruction set with custom motion profiles and Axis commands
- Modular, easily adaptable PID control loops
- Enhanced troubleshooting tools including Debug, Trend and PID views (with PID auto tune)
- Integrated project, communication and OS security
- Software selectable analog with auto-scaling
- Stage sequencing
- Seamless integration with high-level IT systems and IIoT/cloud platforms using MQTT(S), HTTP(S), FTP protocols and Rest API capability
- Much more...



# Do-more! really packs a punch



Built using extensive software development expertise with customer feedback and decades of PLC hardware design knowledge, these PLCs deliver advanced functionality at a budget-friendly price.

Here are a few of the many features available with the Do-more family of PLCs:

- High-performance processors
- Internal RAM and optional external microSD data storage (on select models)
- Ethernet, serial and USB communication available
- Onboard high-speed I/O with high-speed expansion I/O options for frequencies up to 2MHz (BRX series only)
- Hot-swappable communications port (BRX series only)
- FREE advanced programming software with powerful development tools



**BRX** Do-more! BRX PLC platform  
The latest Do-more edition, built exclusively for the Do-more engine. Available in four form factors with up to 36 I/O points built in.

Check latest pricing:  
<https://go2adc.com/dmbrx-ps>



**Direct LOGIC** Do-more! H2 PLC platform  
Using the DirectLOGIC industry-proven I/O hardware, this PLC series is incredibly powerful and an incredible bargain.

Check latest pricing:  
<https://go2adc.com/dm-ps>



**TERMINATOR T1H** Do-more! T1H PLC platform  
The compact T1H series control system combines the modular and space-saving package of our Terminator I/O line with a highly capable Do-more! CPU.

Check latest pricing:  
<https://go2adc.com/dm-ps>

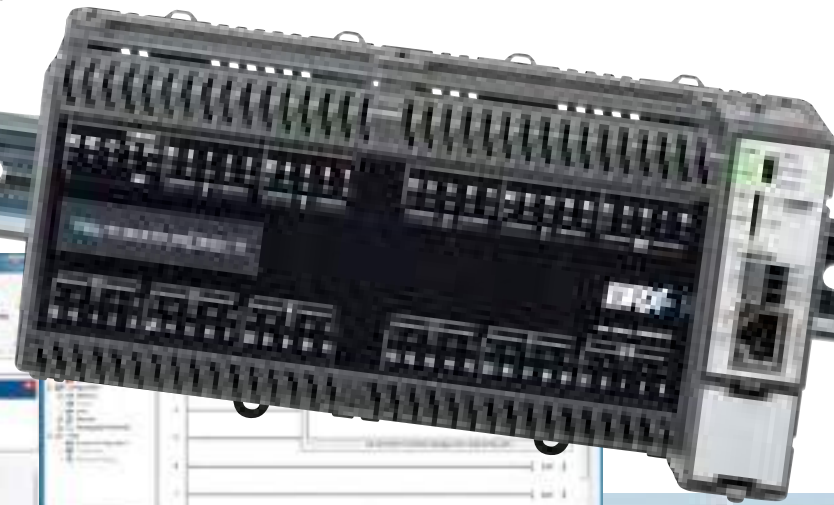
Find out all you need to know at: [www.Do-morePLC.com](http://www.Do-morePLC.com)

# FREE software that's designed around YOU

## Your success is our success

At AutomationDirect, we aren't interested in squeezing every dollar we can out of your PLC purchase. We would much rather give you what you need to be successful with our products and in turn keep you coming back. That's why we never charge a dime for the Do-more Designer programming software. This software was designed to not only be easy-to-use but to provide the tools you need to get the most out of your Do-more! PLCs. We want you to be satisfied with your purchase, and paying extra for software just isn't that satisfying!

Download the fully-functional (not a demo) software and try it out. You'll be surprised at how robust FREE can be.



**"The Do-More software is more user friendly than any I have ever used before. PID, Modbus communications, Filters etc... All very easy to use!"**

SK in ENDERBY, BC

## Let our instructional videos show you how

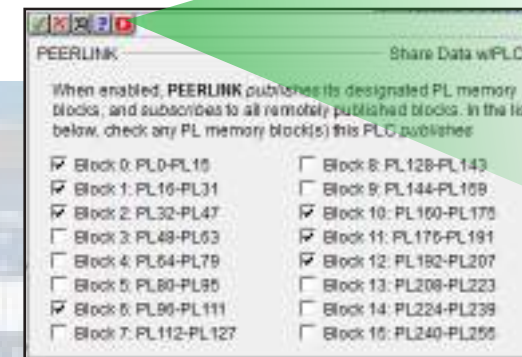
Enhanced video help is incorporated right into the instruction set of Do-more Designer. If you need assistance with an instruction, you can select the video icon (if available) to see a quick video explanation of how the instruction works and/or how it needs to be configured.

## No Frustration Navigation

The Do-more Designer software is jam-packed with features and includes an intuitive software interface to make finding your way around easier than ever. The System Dashboard gives you real time project status such as enabled interrupts and used program memory percentage. It also provides interactive graphics and links that will take you directly to the feature you need to get the job done.



**GO!** FREE Do-more PLC software: <https://go2adc.com/dmsw-ps>



## Timesaving Project Simulator

The integrated simulator provides virtual inputs, outputs and memory locations that you need to test your control program without the hardware connected. This can jump-start your project development on the front end and reduce unexpected errors when the system goes live.

Think about that - you can test your program design before even ordering the hardware!

See all that Do-more Designer has to offer:

**GO!** [www.Do-morePLC.com](http://www.Do-morePLC.com)

# Productivity PLCs - value engineered to perform

# Increase your productivity in more ways than one



**Productivity**Series.....

## Easily adapts to meet your needs

The Productivity family of PLCs is our most versatile family. In terms of hardware, Productivity offers three distinct form factors with two being rack-based and one being stackable. Each series offers different I/O capacities but all use the same programming software, allowing you to easily scale your control up or down depending on the application or machine build. The ProductivitySuite software provides versatile programming with tag name addressing that has no predefined memory structure, and offers convenient device integration for easy plug-and-play operation with our PS-AMC motion controllers, GS drives, Protos X field I/O, and Stridelinx VPNs.



**“We are an OEM, and in the past used the Allen-Bradley Compactlogix platform for our higher end equipment. We think we have found its replacement...The idea of a low cost controller, with all the available communication ports is a big plus for us. We really like, and prefer, the tag based programming utilized by this unit. We typically use drives to control conveyors running to our machinery, and the fact that the drive communication, and variables are on-board is fantastic... We think this one is a winner!”**  
Todd in ONTARIO, CA

## Here are just some reasons to consider the Productivity series:

- Numerous onboard communication ports to meet in-house and on-site network requirements
- High-contrast OLED/LCD displays provide accurate process variable data as well as system diagnostics in real time - No meter required! (P2000/P3000 only)
- Convenient QR codes link customers to needed documents in an instant (P1000/P2000 only)
- Auto-discover local and remote PLC bases, Protos X field I/O, PS-AMC motion controllers and GS series drives
- Integrated Stridelinx VPN support
- Access to remote installations using integrated web server and/or mobile app
- Hot-swappable I/O for easy hardware changes on-the-fly (P2000/P3000 only)
- Scalable product offering from large control systems with thousands of I/O and high demand applications (speed, communications, expandability) to simple, low cost, space-saving stackable I/O platforms
- Project simulator provides a head start on code verification
- ABS certified for marine applications (P2000/P3000 only)

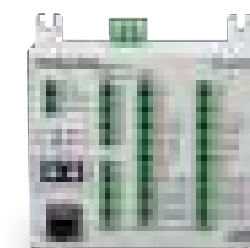


Check latest pricing:  
<https://go2adc.com/Productivity-price>

Whether you are a machine builder, systems integrator or anyone in need of a advanced, low-cost controls solution, the Productivity family of controllers can deliver. Built to go above and beyond, these controllers offer many outstanding features that provide easy programming, multiple networking solutions and faster troubleshooting.

## Here are a few more of the many benefits you get with Productivity:

- CPUs with expansive 50MB memory
- 32GB of microSD data logging
- Unmatched built-in communications capabilities, including local and remote I/O ports, EtherNet/IP, custom protocols, and more
- Built-in Ethernet port allows for HMI and peer-to-peer or business system networking (no Ethernet communications module needed)
- Modular rack-based or stackable footprint with many discrete and analog I/O option modules, scalable up to 59K+ I/O
- Plug-and-play USB programming
- Advanced “fill-in-the-blank” instructions for utmost ease of use
- Tag name programming with advanced user-defined structure data types
- Easy-to-use coordinated motion control with the PS-AMC motion controllers and built-in motion instructions
- And so much more...



- FCO** Flying Cutoff
- GEAR** Gear Drivetrain
- HOME** Find Home
- MSEQ** Motion Sequencer
- RTA** Rotary Table Application
- SMOV** Simple Move
- SPOS** Set Position

See what Productivity can do for you at: [www.ProductivityPLC.com](http://www.ProductivityPLC.com)

# Fast Programming with FREE software



## Developed in-house with customer feedback

Productivity Suite is our free programming software for the Productivity family of controllers. Our own software engineers developed this programming package at our headquarters near Atlanta, Ga. It was designed with input from our technical service team who communicate on a daily basis with our customers. As a result, Productivity Suite not only meets but exceeds the needs of our customers, and provides a quick, user-friendly way to efficiently program the Productivity family of PLCs.

## Simple simulation

There is no better way to get a head start on project development than building code ahead of time with the assistance of a project simulator. Now you can start your logic early and verify it's operation even before the hardware has arrived!

Simply select the "Simulator" option in the toolbar, transfer your code as you would with a real CPU, turn on monitoring and/or open a Data View window, and start testing your code. This tool comes in handy not only with new builds but also when maintaining existing systems. With systems that are already live, and where a shutdown may be required, getting in and getting out quickly is crucial and the simulator is there to help make sure there won't be any surprises.

### Simulator supports:

- Analog or Discrete I/O simulation
- Data View monitoring
- Modbus TCP/IP, EtherNet/IP and CPoE (custom protocol over Ethernet)
- Ignores unsupported instructions

## Advanced user defined structures

User defined structures (UDS) are a powerful tool that helps speed up program development and improve uniformity of your logic. A UDS is a group of data types (BOOL, FLOAT, INT, pre-defined structures, etc.) which are defined by the user and re-used at will.

Productivity Suite allows you to embed arrays within the UDS definition, as well as, create arrays of structured tags so that you can programmatically index through your tag variables.

For example, `Mixing_Tank(1).Transfer_Pump(2).VFD.RUN_Command` which contains two nested UDS arrays (Transfer\_Pump and VFD) inside the Mixing\_Tank UDS definition.

## Program your way! Tag name based control that's powerful and easy to use

With Productivity Suite you have the freedom to define user tags with no limits or fixed boundaries. Configure timers, counters, integer words or any other data types you need. With tag name based programming, there are no pre-defined, fixed memory maps and no wasted, unused memory allocations.

Tag name based control also offers the ability to descriptively identify the control elements in your program. Older, fixed memory controllers force the use of pre-defined nomenclature for the data types. Which would you rather see when troubleshooting: T4:01 or Oven1 Purge Timer.Pre? The tag name helps identify the element as a numeric value for the oven purge timer's preset, making its purpose immediately clear.



**Productivity** Suite

**ONE SOFTWARE PACKAGE PROGRAMS ALL PRODUCTIVITY PLCS!**



**There's so much more! See all that Productivity Suite has to offer at: [www.ProductivityPLC.com](http://www.ProductivityPLC.com)**

**GO! FREE Productivity Suite PLC software: <https://go2adc.com/psw-ps>**

# Get ready to say "YES!" to LS

What do you get when you take a well-established, global PLC manufacturer and combine that with a customer-focused, value-centric online supplier? You get the best of both worlds, otherwise known as the LS Electric XGB PLC from AutomationDirect. The LS Electric controller has many great features including a robust hardware selection, **FREE** advanced IEC-based programming software, and many high-level motion specific capabilities. Add to that the customer satisfaction, the low cost, and the **FREE** tech support provided by AutomationDirect, and you'll definitely say "YES!" to LS!



**Advanced motion control is the XGB PLC's specialty!**

**For only \$299.00 (2-axis model) you get:**

- Position control
- Speed control
- Feed control
- Circular arc interpolation
- Linear interpolation
- Helical interpolation
- Ellipse interpolation
- CAM control
- Homing
- and much more

**LS XGB**  
PLC

The LS Electric XGB series controller is a motion control powerhouse. This PLC provides numerous motion control capabilities using the integrated 2- or 6-axis pulse/direction motion inputs/outputs (up to 200kHz) on the CPU module, and up to 4 channels of high-speed inputs at up to 500kHz on each high-speed counter module. With LS XGB PLC's advanced motion you get:

- 400 moves per axis
- Various single-axis operations: position control, speed control, feed control, multi-axis simultaneous start, and point operation
- Various multi-axis operations: circular arc interpolation (up to 3 groups, 2 axes per one group), linear interpolation (up to 6 axes), helical interpolation, ellipse interpolation
- Switching control during operation: position/speed control switching, speed/position control switching, position/torque control switching
- CAM control: 8 types
- Seven homing methods: in positioning control, use Homing method supported by each servo driver (17 types); set the origin of machine without homing by setting the floating origin
- Acceleration/deceleration methods of Trapezoid or S-type
- High-speed start process: 1ms (1~2 axes), 2ms (3~5 axes), 3ms (6 axes); no delay time between axes in simultaneous start and interpolation start



## Versatile hardware for any application

The LS Electric XGB PLC has numerous hardware options to exactly match the job at hand. Use any one of the 4 CPUs as a stand-alone controller with 32 built-in I/O or add up to 7 expansion modules for up to 244 additional I/O points.

- 4 super compact (1.63" x 3.54") stackable micro PLC processors with 16 inputs and 16 outputs that include motion capability
- 2-axis and 6-axis versions
- 4 high-speed counter inputs, 4 preset inputs
- Ethernet, serial, and USB ports

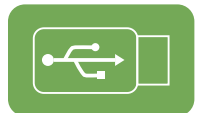
The XGB PLC is a perfect control solution for:

- Palletizers
- Pick-and-place applications
- Rotary tables
- Flying cutoff systems
- Precision machining tools
- Automated welding systems
- and much more

**Check latest pricing:**  
<https://go2adc.com/lspic-ps>

**See more reasons to consider the LS XGB PLC at:**  
<https://go2adc.com/whyis-ps>

USB



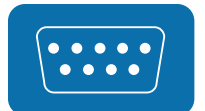
Ethernet



RS-485



RS-232



Pulse positioning



Built-in & expansion I/O



High-speed I/O



Advanced motion control



FREE SOFTWARE w/ multiple IEC languages



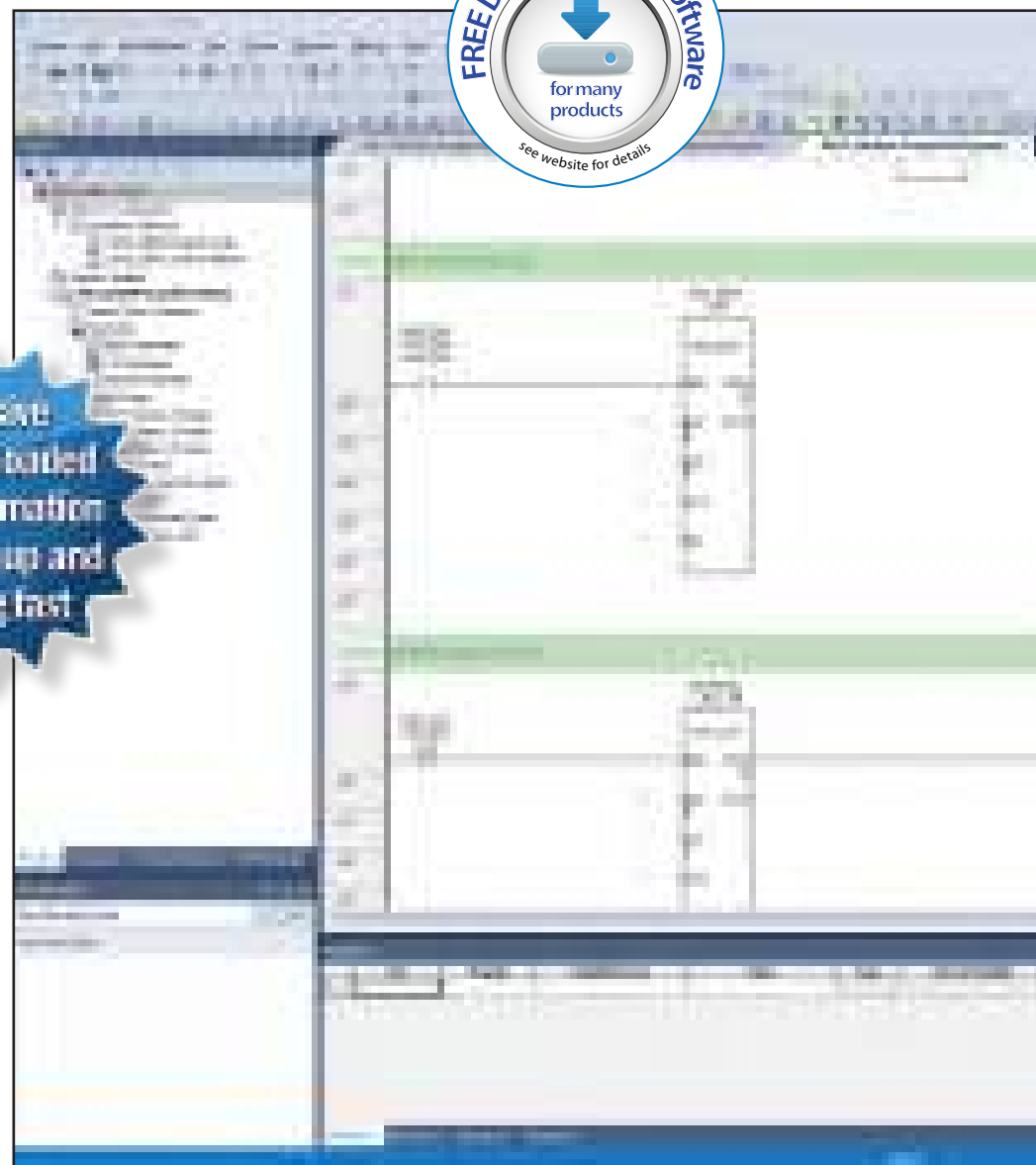
# FREE IEC-based programming software



## State-of-the-art instructions

The XG5000 programming software has all the usual commands you would expect from a PLC software instruction set including timer, counter, compare, etc., but it also features a wide variety of specialized and state-of-the-art instructions for efficient code development including:

- Data processing
- High-level math
- Advanced motion control
- Multiple data and code conversion



## Powerful software that's absolutely FREE!

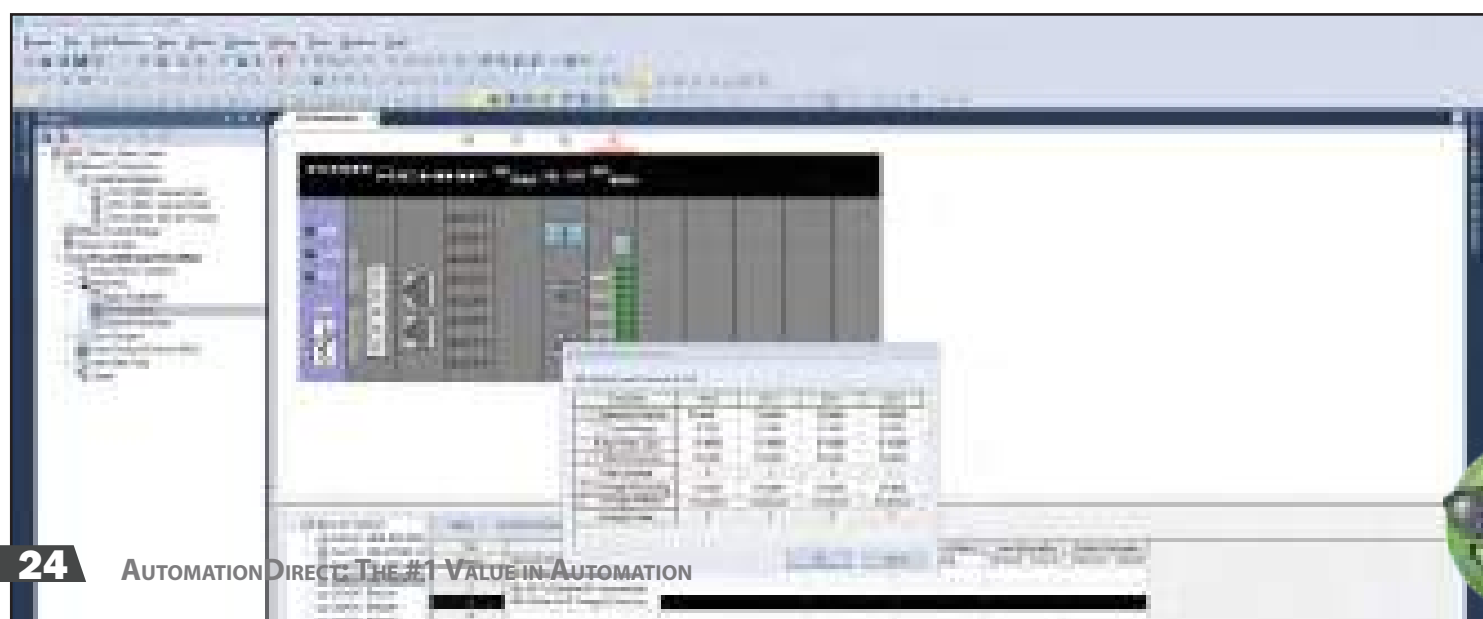
The LS Electric XGB PLC programming software is an advanced tool for configuring and programming LS PLCs. This highly developed software has been fine-tuned over the years to provide a wealth of features and capabilities, including:

- Program segmentation with different Scan programs and various Task programs
- Numerous data types including IEC standard data types (64 bit available) and 3-dimensional arrays
- Handy two-dimensional trend graph (X-Y plotter)
- Easy edits of global and local variables using MS Excel or View Variable, View Device, View Flag, Auto-fill options in software
- Convenient program edits with unlimited Undo/Redo functions, block edits in cell units, an enhanced Find/Replace function, program execution controls, and more
- Various monitoring functions such as variable monitoring, device monitoring, system monitoring, trend monitoring, special module monitoring, etc.
- Various message windows to edit and inspect the program easily
- Custom events that allow actions to take place once user defined conditions are met for a specific device
- Editing, monitoring, or managing multiple interlocked PLCs included in the same project at the same time
- Online editing capabilities

## Built-in project simulator provides huge time savings

The XG-SIM is a Windows-based virtual PLC that allows an operator to execute and debug a program without a physical PLC present. With the simulator, you can validate your control logic as it is created instead of in the field for much easier startups.

- Simulate a program created with ladder, structured text, or sequential function charts
- Use functions such as system monitor, device monitor, trend monitor, data trace, and user events as if online with a real PLC
- Simulate I/O as if field devices are connected to ensure proper system-wide control



The LS Electric XGB PLC can be programmed using four of the five languages included in the IEC 61131 standard for industrial controllers:

1. Ladder Diagram (LD)
2. Structured Text (ST)
3. Sequential Function Chart (SFC)
4. Instruction List (IL)



You can decide whether to utilize well-established Ladder Logic or go with the text-based Structured Text language. Maybe you prefer graphical Sequential Function Charts to organize your program. With the LS XGB PLC you can pick the language you or your customers prefer and run with it. With Ladder or Structured Text, the XG5000 software has over 700 function blocks available including over 70 motion control specific blocks for convenience when programming complex systems.

**But that's not all! See more of what the XG5000 software has to offer at:**

**<https://go2adc.com/lsw-ps>**

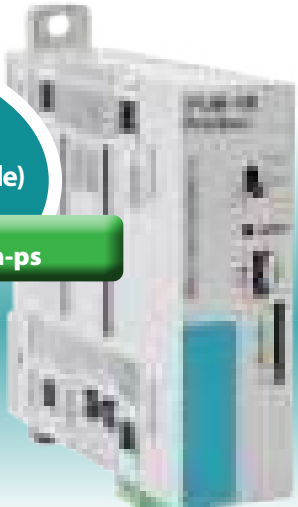


# Productivity<sup>®</sup> Open

Open-Source Agility Meets Industrial-Grade Toughness

**Industrial-Grade CPU (Arduino-Compatible)**

Check latest pricing: <https://go2adc.com/p1am-ps>



## P1AM-100 CPU

C++ UL-certified CPU that combines open source control with AutomationDirect industrial I/O

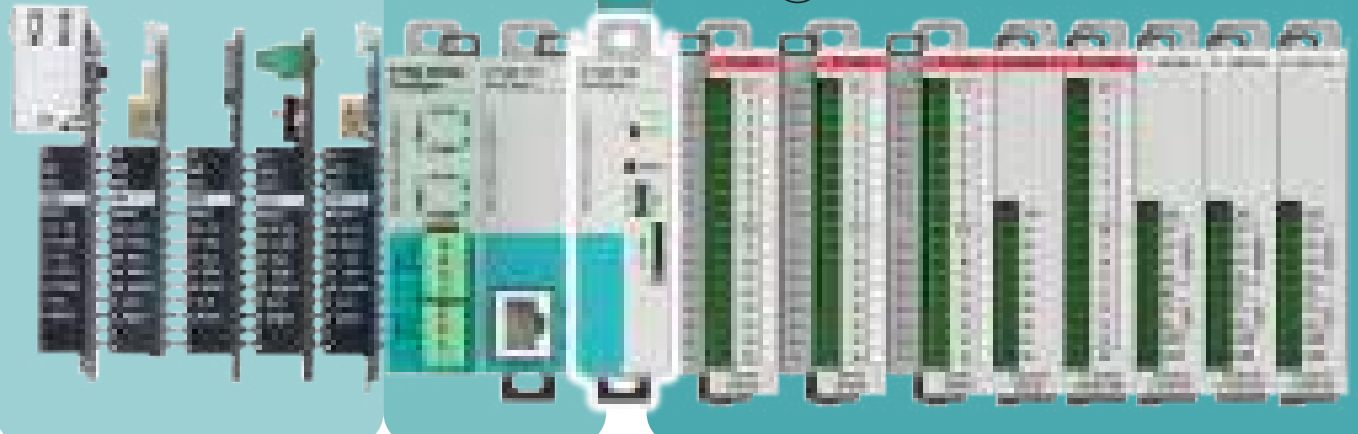


## Open-source MKR shields

Generic and Arduino-brand shields including DIY modules

## AutomationDirect industrial I/O, shields, and power supplies

- Power Supplies
- Industrial-grade Shields
- Discrete I/O Modules
- Analog/Temperature I/O Modules
- Relay I/O Modules
- Specialty I/O Modules



## P1AM-100 CPU

A rugged open-source CPU that's compatible with the MKRZero Arduino and seamlessly bridges standard 3rd-party shields with AutomationDirect industrial PLC I/O



# MAKER IN...INDUSTRIAL OUT

With the ProductivityOpen platform you get all the great features of a standard Arduino plus the added power and reliability of an industrial controller.

### Reducing the risk of open source

With the growing popularity of single-board controllers and the risks involved with implementing them in industrial applications, it was apparent that our industry needed an open-source controller that would hold up in the most extreme conditions.

Produced in conjunction with FACTS Engineering, the ProductivityOpen controller (P1AM-100) is just that as it combines the best of both worlds -Maker ingenuity coupled with our Productivity controller family's proven reliability.

### Works with Productivity1000 industrial I/O

The I/O interface chipset supports the full suite of Productivity1000 I/O expansion modules, including:

- Discrete
- Analog
- Temperature
- Relay
- High-speed Input
- PWM



Industrial-Grade Arduino-Compatible CPU



- Open-source sample code available
- C++ programming
- Add-on shields for product optimization
- Low cost controller



- Industrialized power supply for EMI and ESD protection
- UL61010 listed for industrial applications
- Expandable I/O with over 240 points using right-side I/O modules and left-side shields
- Compatible with Productivity1000 I/O modules (also UL61010)
- Industrial-grade shields for Ethernet, GPIO and prototyping
- ProductivityBlocks, intuitive block programming software
- 2 year warranty

**Onboard LED** (under user control)

**Run/Stop Switch** (under user control)

**USB Interface**

**SD Card Slot**

### Overview Video:

See what ProductivityOpen has to offer!



Go to <http://go2adc.com/p1am-overview> to view

For more information go to: <https://go2adc.com/p1am-ps>



# Rugged HMIs that are priced right!

## A lot of HMI for your money

**C-more** Touch Panels are designed to give you one of the best costs of ownership, considering initial price, features, ease of use, reliability and free award winning technical support.

We continue to improve hardware and software features. Perhaps this is why more and more people find that **C-more** has what it takes to meet most of their HMI application needs. But don't take our word for it, see for yourself. Visit our Web site (<https://go2adc.com/cm-review>) for a sample of the reviews for **C-more** HMIs.

## Hundreds of powerful features

C-more touch panels are fully programmable and provide power and flexibility through a vast set of features. Color TFT touch screen HMIs are available in sizes from 4 inches up to 22 inches, or in a headless version.

- FREE Software
- Pre-built touch panel components for easy screen design
- Screen objects such as Toggle Switch, Slide Switch, Selector Switch, Throw Switch, Thumbwheel Switch, Meters, PID Faceplates, Analog/Digital Clock
- SD card for user program backup and logging (selected models)
- Field expandable user memory
- Up to 16.7M colors
- Multiple languages (up to 9)
- Various communication capabilities with up to 2 Ethernet ports, up to 3 serial ports, and up to 4 USB ports built in
- Up to 9999 screens, depending on complexity
- Built-in clock and calendar
- Built-in soft keypad for numeric and alphanumeric entry
- Password protection for every touch object
- Passwords for up to eight user groups
- Import bitmaps or bitmap objects, such as pushbuttons
- 40-character tag names
- Sound - Animation Objects
- Project Simulation
- Object grouping
- Color gradation for objects
- Analog touch overlay (no predefined touch cells)
- Overlapping Objects
- Background Screens
- Send e-mail
- Web server
- FTP Server
- Plus more ...

**FREE C-more Remote HMI App**  
Remote access and control on the go!  
Available now in your app store.

## FREE Software

Download as often as you need. No license or key needed.

Get it now:  
[www.go2adc.com/cmoresw](http://www.go2adc.com/cmoresw)



Check latest pricing:  
<https://go2adc.com/cm-price>



With the **C-more** headless HMI, you can display your factory floor data how and where you choose. The EA9-RHMI has all the powerful functionality of the C-more Touch Panel HMIs, but without display size restrictions. This HDMI-enabled device works with televisions, monitors, projectors, and most any other HDMI display device of any size to display real-time operational data or messages. Use the **C-more** Remote mobile app or the embedded Web Server if you prefer no local display at all.



# Do more for LESS with C-more Micro Panels!



STN monochrome versions offer twelve selectable background colors that allow you to use color to convey meaning.

TFT full color versions offer up to 32,767 colors for more vibrant and colorful project screens.

**C-more Micro** panels are one of the most popular and reliable, value-packed operator interfaces in the industrial market today. No matter the budget or system size, we have a **C-more Micro** operator panel for the job. And all of our panels come with FREE programming software that includes a project simulator and many other time saving features. You'll always get the biggest bang for your buck with **C-more Micro**.

- Micro touch panels and non-touch panels available
- The 3-inch cost-conscious panels display standard or high contrast STN monochrome graphics with 12 selectable background colors
- 32K color TFT displays are available on larger display models
- Ethernet communication built in on 3-inch and 4-inch EA3 models, optional Ethernet communications module (EA-ECOM) available for 6-inch EA3 models
- Download FREE programming software with simulator at: <https://go2adc.com/microosw>
- Full 2-year product warranty

Check latest pricing:  
<https://go2adc.com/cm-price>

# Industrial LED message displays keep your plant personnel in the know

ViewMarq LED message boards can display preformatted and real-time factory floor data messages sent by a PLC, PC, or other master device. The text message displays can be controlled by:

- ASCII strings through the RS232 or RS485 port
- Modbus RTU messages through the RS232 or RS485 port
- Modbus TCP messages through the Ethernet port

## The ViewMarq line offers:

- One-, two-, and four-line displays
- Viewing distances up to 400 feet and 140 degree viewing angle
- (1) RS232, (1) RS485 and (1) Ethernet port standard on all models
- NEMA 4 / NEMA 12 extruded aluminum housings suitable for harsh environments
- Chain and wall/ceiling mount brackets included

Check latest pricing:  
<https://go2adc.com/vm-price>



**VIEWMARQ**  
LED MESSAGE DISPLAY



23.3 inches

1 line

2 line

4 line

44.50 inches

1 line

2 line

4 line



# AC Drives and DC Drives for less!

## WEG CFW500 High-performance AC Drives

Support closed-loop flux vector speed control as well as torque control modes and can operate both AC induction motors and permanent magnet AC motors. Offered in models with an IP20 or IP66/NEMA 4X enclosure.



- Control modes include Scalar, Vector Control (sensorless and closed-loop with encoder feedback), and VVW PM (suitable for fan, pump and compressor) 100kA short circuit current rating
- STO – Safe Torque Off
- Built-in PLC
- Optional Ethernet communications Modbus TCP and Ethernet/IP
- Speed and torque control down to 0 (zero) rpm & precision of 0.01% for speed control are attainable with closed-loop encoder feedback using vector control
- Available horsepower sizes from 1/4hp up to 150hp\*
- Voltages available, 230 VAC (single and three-phase), 460 VAC

### NEMA 4X (IP66) features

- Protection against high-pressure water spray
- Suitable for use in direct sunlight
- Direct machine mount

### High-performance built-in features

- Built-in SoftPLC (Same programming software as other WEG VFDs CFW-WPS)
- Built-in RS-485 (Modbus RTU) communication
- Plenty of built-in I/O, expandable with option modules
- Built-in 24VDC power supply (max. 150 mA)

### Optional Accessories and features

- STO - Safe Torque Off (TUV certified) with option module
- Keypad with backlight, with main display line, secondary display line and bar graph display

## WEG - CFW300 Drive Units (120 / 230 VAC) w/ PLC

High-performance VFD in compact size



- Sixteen units available from 1/4hp to 5hp\*
- Voltages available: 120 and 230 VAC (single and three-phase)
- Built-in PLC
- V/Hz control mode and sensorless vector control modes

## WEG - CFW100 Micro Drive Units (120 / 230 VAC) w/PLC

Smallest VFD in the world that's still loaded with features



- Available horsepower sizes from 1/4hp to 1hp\*
- Voltages available: 120 and 230 VAC (single and three-phase)
- Built-in PLC
- V/Hz control mode and sensorless vector control modes

## IronHorse ACN NEMA 4X AC Drives

NEMA 4X sensorless vector AC drives have features normally only found on more expensive drives, in a NEMA 4X enclosure at a great price.



- 240 VAC: three-phase up to 20hp, single-phase up to 10hp
- 460 VAC: three-phase up to 30hp, single-phase up to 15hp

## DURApulse® GS10 Micro AC Drives

Our most affordable and compact inverter drive with sensorless vector support



- Available horsepower sizes from 1/4hp up to 10hp\*
- Voltages available: 120, 230 VAC (single and three-phase) and 460 VAC

## DURApulse GS20 and GS20X AC Drives

Take the best features of our popular GS2 series drives, add Sensorless Vector and Field Oriented Control, expand built-in I/O, and include an integrated PLC with optional Ethernet communications. GS20X models come in a NEMA 4X enclosure.



- Available horsepower sizes from 1/4hp up to 30hp\*
- Voltages available: 120 VAC, 230 VAC (single and three-phase), 460 VAC, 575 VAC

## DURApulse High-Performance AC Drives - GS4 Series

Sensorless vector technology up to 300hp, w/PLC



- Available horsepower sizes from 1hp up to 300hp\*
- Voltages available: 230 VAC (single and three-phase), 460 VAC
- Built-in PLC

## IronHorse® Digital DC Drives

High-performance digital DC drives in a NEMA 4X enclosure



- Microprocessor-based design that is programmable
- Sizes from 1/2hp to 2hp in 120 to 240 VAC\*

## DC Drives - GSD Series

Available in Open Frame and NEMA 4/12 or 4X Enclosed versions



- Available horsepower sizes from 1/50hp up to 3hp\*
- Low voltage ranges supported from 12 to 40VDC
- High voltage ranges supported are 120 and 240 VAC
- Models available with open frame or NEMA 4/4X enclosures



## AC Motor Soft Starters



Semiconductor solid state soft starters provide many advantages when used instead of electromechanical contactors.

- Compact WEG SSW05 Series: 10-85A @ 230-460 VAC
- Compact SR22 Series: 1-phase 5-40A @ 110-240 VAC, 3-phase 5-40A @ 208-460 VAC
- Basic WEG SSW07 Series: 17-412A @ 220-575 VAC
- Basic SR35 Series: 1-phase 17-361A @ 110-240 VAC, or 3-phase @ 200-600 VAC
- Full-Featured SR55 Series: 17-477A @ 200-480 VAC

**GO!** <https://go2adc.com/softstarters-ps>

## Software

Easily configure your system components with our user-friendly software packages. Most of our software is available for free download including PLC programming software, HMI programming software, drive configuration software and many others. Our software provides the tools you need to get your system up and running fast.

- Free PLC programming software (download)
- Free HMI programming software (download)
- Configuration software packages for a variety of process instruments
- Free AC drive configuration and programming (built-in PLC) software (download)
- Free motion control systems' configuration software (download)

**GO!** <http://go2adc.com/software-ps>

## Universal Field I/O

For controller installations where end devices are located long distances away, field I/O or distributed I/O systems can greatly improve system efficiency and reduce wiring costs. Localizing field terminations at the machine or device being monitored/controlled allows for easier installations/modifications, shorter wire runs, and faster troubleshooting.

Distributed I/O with Modbus® TCP, EtherNet/IP, Modbus RTU, and DeviceNET support

IO-Link master modules and hubs allow traditional field I/O signals as well as diagnostic and operational data from IO-Link capable devices, helping pinpoint potential problems or improvements



**GO!** <https://go2adc.com/fio-ps>

**Kelsey in WYOMISSING, PA wrote:**  
 "We've been using Automation Direct for years and will continue to do so. Good selection of products and customer service. Quick shipping, never have any problems. A++ service"



**GO!** <http://go2adc.com/drives-ps>

### Process Control and Measurement

Process measurement and control implies continuously changing variable data and/or control methods in an industrial process. Different from discrete (ON/OFF) states, numeric values over a set range are sensed or transmitted in continuous (flow production) or batch (a set quantity or output) processing. Flow, level, and temperature are common process variables.

- Temperature and process controllers
- Digital and process panel meters
- Temperature sensors and transmitters
- Infrared pyrometers
- Pressure sensors and gauges
- Level sensors and controllers
- Flow sensors and transmitters
- Signal conditioners
- Pipeline valves
- Solenoid /media separated process pipeline valves
- Current to pneumatic (I/P) transducers
- Vibration switches and transmitters
- Trumeter graphical panel meters
- Cloud data logger with I/O
- Hour meters and counters

**GO!** <http://go2adc.com/process-ps>

### Discrete and Analog Sensing

Available sensors include rotary encoders for detecting position and speed; sensors for detecting proximity, pressure, temperature, level, flow, current, and voltage; and limit switches for detecting presence or end-of-travel limits. With discrete or analog outputs, these sensors can provide data critical to automating any machine or process.

- Proximity sensors
- Photoelectric sensors
- Limit switches
- Precision limit switches
- Inclination sensors
- Laser sensors
- Color and contrast sensors
- Area sensors
- Encoders
- Current and voltage sensors
- Ground fault sensors
- Pressure sensors and gauges
- Temperature sensors, switches, transmitters, and thermometers
- Liquid level sensors
- Flow sensors
- Ultrasonic sensors
- Fork sensors
- Linear position sensors
- Vibration sensors
- Position indicators

**GO!** <http://go2adc.com/sensors-ps>

### Motors and Motor Controls

Motors are the power transmission workhorse of industry, converting electrical energy into mechanical movement. Selecting an AC motor or DC motor for an application depends on considerations such as power, speed control, cost and ease of maintenance.

For every motor, some form of electrical control is required, from simple ON/OFF to more complex variable speed applications. Motor control devices encompass simple manual controllers, motor contactors and starters, drives and soft starters.

- IronHorse general purpose AC motors up to 300hp
- Stainless steel and white epoxy washdown AC motors
- Stainless steel AC motors
- IronHorse Farm Duty up to 10hp
- IronHorse three-phase ODP motors up to 50hp
- Marathon inverter duty AC motors up to 100hp
- Marathon permanent magnet AC motors up to 10hp
- Marathon single-phase AC motors up to 5hp
- DC motors up to 2hp
- Motor controls and contactors up to 300hp
- WEG single-phase AC motors up to 2hp
- WEG three-phase AC motors up to 3hp
- WEG brake motors up to 2hp

**GO!** Motors: <http://go2adc.com/motors-ps>  
Motor controls: <http://go2adc.com/mc-ps>



**GO!** What our current customers think: [www.automationdirect.com/reviews](http://www.automationdirect.com/reviews)



### Structural Frames/Rails

SureFrame cut-to-length aluminum T-slotted rails make constructing a frame or machine easy and quick.

**NO CUT CHARGES**

- Complete assortment of hardware and accessories to complete your slotted rail project
- You specify length and cut angles for each piece
- No cut fees
- Select sizes and weights available in UV-resistant black anodized
- FREE custom cut 3D CAD available
- Free 2-day delivery on all orders over \$49

**GO!** <https://go2adc.com/alum-ps>



### Motion Control

Motion control typically refers to systems with accurate position/velocity/torque capabilities operating in either open or closed loop mode. Open loop stepping drives send motion commands to stepper motors, but receive no information about the result. Closed loop servo systems have feedback devices at the motor shaft to verify or adjust the resulting motion.

- ProductivityMotion controller
- PLC-based motion control using BRX, Productivity and LS PLCs
- SureServo®2 drives and motors, up to 15kW
- LS-Electric® servo drives and motors up to 7.5kW
- Stepper and servo gearboxes
- SureStep® stepper drives and NEMA motors
- Stepper motor linear actuators
- Leadshine® stepper drives
- Linear slides
- Encoders
- CUI Devices® Kit Encoders
- XYZ Gantries

**GO!** <http://go2adc.com/motion-ps>



### Jason in PARAGOULD, AR wrote:

“Automation Direct is my #1 source for all of my companies automation needs. You just simply can’t beat their cost and quality! Pair that with excellent customer service and it makes an unbeatable combination. Way to go Automation Direct!”



### Pneumatics

Pneumatic systems are used extensively in industrial automation and are usually powered by compressed air. Pneumatic systems use actuators such as cylinders that are typically controlled via manual, air-pilot, or solenoid valves, and are designed in when they can provide a lower cost, more flexible, or safer alternative to electric actuators.

- Tubing, hose and fittings in a wide variety of configurations
- Air cylinders and position switches
- Solenoid valves (including ISO 5599 valves)
- Rodless air cylinders
- Modular solenoid valves (Ethernet or hardwired)
- Pushbutton valves
- Air prep components including filters, regulators, and lubricators
- Total Air Prep (TAP) all-in-one units
- Rotary actuators and grippers
- Pressure switches, transmitters, and transducers
- Pneumatic pushbuttons and limit switches
- Electro-pneumatic systems
- Vacuum products - suction cups, ejectors, spring plungers

**GO!** <http://go2adc.com/pneumatics-ps>

### Pushbuttons, Switches and Lights

Pilot devices are an integral part of most automated processes, from simple pushbuttons and indicating lights, to selector switches, foot switches, and visual/audible signal devices. A wide selection of 16mm, 22mm, and 30mm panel-mount devices is available; hazardous location control stations meet environmental listings; signal devices offer a variety of mounting options.

- KILLARK® hazardous location control stations
- IDEM emergency stops
- Fuji®, Schmersal, AutomationDirect, and Eaton pilot devices in 16mm, 22mm or 30mm sizes, and metal or plastic bodies (depending on brand)
- IP69K-rated pilot devices from Schmersal
- Captron IP69K capacitive pilot devices
- Werma audible and visual signal beacons
- WERMA and Patlite stacklights
- Molex pendant switches
- Foot switches
- Alarms, horns and buzzers

**GO!** For pilot devices <http://go2adc.com/pilot-ps>  
For stacklights <http://go2adc.com/stacklights-ps>

### Communications

Communication is a vital component of any modern control system application. Take advantage of that capability with low-priced, highly-reliable communication products such as secure VPN routers, managed/unmanaged Ethernet switches, media converters and Ethernet cables. Serial converters and gateways complete links to simpler systems that may already be in place.

- Industrial managed and unmanaged Ethernet switches
- StrideLinx VPN routers and cloud services for secure remote access
- Pocket Portal IIoT remote I/O
- MQTT gateways
- Modbus gateways
- Network adapters/converters
- Ethernet cables

**GO!** <http://go2adc.com/comm-ps>

### Robert in QUALITY, KY wrote:

"I have never had a problem with any of ADC's products. The price and availability of their product line is not matched anywhere that I have found. Their PLC line as well as other automation products are on a par with anything I have found on the market in the same price range and provide a cost effective alternative to the old industry standards that are much more expensive. The only reason I go anywhere else is if they don't have the specific item I am looking for, and that is a very rare occurrence."

### Water (Potable) Components

Potable water components are designed for use in plumbing, routing, and dispensing of drinking water and other beverages. All materials that come into contact with the subject media are food grade, and most components have National Sanitary Foundation (NSF International) certifications.

- Regulators
- Solenoid valves
- Hand valves
- Check valves
- Push-to-connect water fittings
- Tubing
- Hose
- Hose clamps

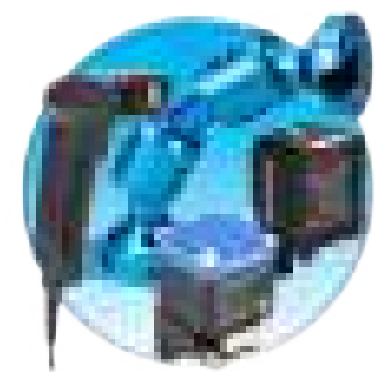
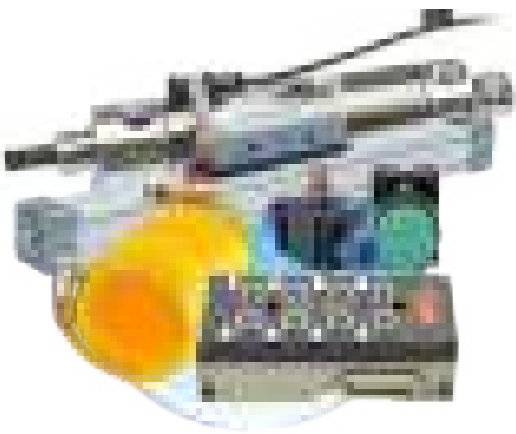
**GO!** <http://go2adc.com/water-ps>

### Identification

Identification products are devices that identify a unique item, type of item or a code and convert this information into useful data. Barcode scanners and RFID units meet the most common needs for industrial applications.

- A selection of Code brand scanners is available, including 1D, 2D and DPM images; scanners can read all common barcodes.
- Contrinex RFID devices use radio frequencies to read and transmit data without the need for line of sight. RFID read/write modules exchange data.
- Datalogic smart vision sensors are self-contained systems that make a decision based on a captured image, very useful for applications requiring presence and/or orientation object detection.
- Swivellink mounting systems
- Wenglor vision lighting

**GO!** <http://go2adc.com/ID-ps>





### Circuit Protection

Circuit protection is a critical part of any industrial or commercial installation, to meet national codes and protect equipment and processes from excess energy that could cause damage or safety issues. An extensive selection of circuit breakers, supplementary protectors, fuses and holders, and disconnect switches is available, many complying with UL 98, UL 508, and UL 489 standards.

- Eaton and Gladiator UL 489 miniature circuit breakers
- AutomationDirect, Gladiator, and Fuji UL 489 molded case circuit breakers
- Eaton and Gladiator UL1077 supplementary protectors
- Edison fuses, fuse holders, and fuse blocks
- Socomec, Gladiator®, and Bryant® disconnect switches
- Bryant UL 508 manual motor controllers
- Socomec manual transfer switches
- Wago and E-T-A electronic circuit breakers
- Merz rotary cam switches

**GO!** <http://go2adc.com/circpro-ps>



### Hydraulics



NFPA style hydraulic cylinders with many mounting options

**GO!** <https://go2adc.com/hydraul-ps>



### Paul in TWINSBURG, OH wrote:

"I have received many ecommerce products and this company is my favorite. Web site is quick and easy to navigate, on-time delivery and great schematic details and don't forget competitive prices. All around \*Five Star\*"

### Power Products

Electrical power products provide safe and efficient power services for industrial and commercial use, and include power transformers, DC power supplies and converters, power distribution blocks, wiring devices, power entry modules, power line filters, surge protectors, and panel interface connectors.

- Acme Electric® and Hammond transformers
- Rhino® DC power supplies and converters
- WAGO power supplies
- Mersen surge protectors
- Roxburgh and Eaton line filters and surge protectors
- Roxburgh power outlets
- Hammond drive isolation transformers
- Edison® power distribution blocks
- Bryant® electrical plugs, connectors and receptacles, and other wiring devices
- AcuAMP® AC current transformers
- Socomec multifunction power meters
- Trumeter graphical panel meters
- Surge protection devices

**GO!** <http://go2adc.com/power-ps>

### Power Transmission

Power transmission products are used in mechanical drivetrains to create movement. Components include linear motion slides and actuators, gearboxes, timing belts/pulleys/bushings, and a host of shaft couplings, bore reducers, and other purely mechanical devices.

- Worm gearboxes (stainless steel models available)
- Helical gearboxes
- Precision gearboxes
- Shaft mount gearboxes
- Timing belts and pulleys
- Couplings and bushings
- Shafting and shaft supports
- igus polymer bearings
- GAM rack and pinions
- Linear bearings and rail

**GO!** <http://go2adc.com/ptrans-ps>



### Tools

The world's most trusted tool brands help you perform electrical wiring and mechanical installation tasks easily and reliably. Our tools include screwdrivers, nutdrivers, hex wrenches, torque tools, wrenches, ratchets, pliers, wire cutters and strippers, crimping tools, cutting tools, meters and testers.

- Southwire multimeters and testers
- Wera nutdrivers
- Sensor tester
- Wera screwdrivers and torque tools
- Wera wrenches, ratchets and sockets
- Southwire and AutomationDirect pliers and stripping tools
- SapiSelco cable ties
- RUKO hole cutting tools
- RUKO grinders and burrs
- Crimping tools from AutomationDirect, Southwire and Z+F, including models with interchangeable die, self-adjusting feature, and rotatable die
- Megapro multi bit drivers
- CH Ellis and Southwire tool bags and cases

**GO!** <http://go2adc.com/tools-ps>



### Enclosures

Enclosures house and protect electrical components and wiring in a wide variety of environments, where NEMA rating standards define the degree and type of protection. Modular enclosures provide added cost-savings and same protection as pre-fabricated enclosures for less. Electrical equipment can be further protected using enclosure thermal management to extend interior component life. Lighting and other accessories accommodate special installation needs.

- Over 7,100 NEMA rated enclosures from Saginaw, Hammond, Wiegmann, Integra, Quadralia, Attabox and Stahlin
- Many types of metallic and non-metallic enclosures
- Modular enclosures
- Data communication racks
- Sanitary enclosures
- Heating, cooling and climate control
- Lighting
- Wide selection of enclosure accessories

**GO!** <http://go2adc.com/enc-ps>

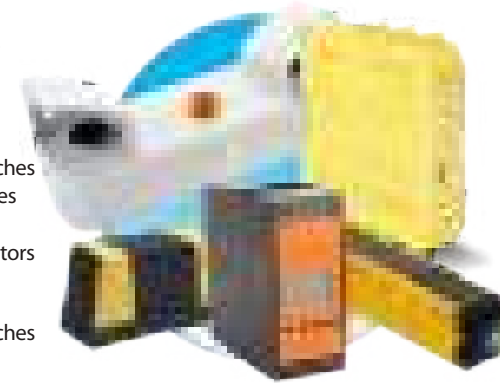


### Safety

Even the simplest process should be in compliance with national and international standards, and now it is affordable to get reliability and high performance for maximum machine safety. These certified machine safety components meet equipment and personnel protection needs, including safety switches, safety light curtains and safety relays.

- Reer MOSAIC safety controllers
- IDEM® and Dold® safety relays
- Speed/Standstill safety relay modules
- Safety laser scanners
- Magnetic safety switches
- Magnetic coded safety switches
- RFID coded safety switches
- Light curtains from Contrinex, Reer and Datalogic
- Two-Hand controls
- Trapped key interlocks
- Safety enabling switches
- Safety mats and edges
- Safety bumpers
- Intrinsically safe isolators
- Hazardous location devices
- Safety enabling switches

**GO!** <http://go2adc.com/safety-ps>



### Terminal Blocks and Wiring

Wiring solutions supply the electrical connections needed to build, upgrade or maintain electrical panels/enclosures and industrial systems. A variety of modular terminal blocks, power distribution blocks, multi-port junction blocks and pre-wired connection cables and modules are available to make quick, clean, safe and efficient installations. Hook-up wire in a variety of ratings is available in pre-cut lengths or in bulk.

- Electrical hook-up wire / building wire
- Konnect-It® and DINnectors® terminal block systems
- Bryant power wiring devices
- Wire duct and tubing
- Standard and sanitary cable entry systems for enclosures
- Wire end connectors, cable glands, sanitary cable glands, connectors and fittings
- ZIPport® connectors
- Murrelektronik and ZIPport multi-port distribution blocks
- Sensor cables
- General- and special-purpose cable ties
- Epson portable label printers

**GO!** Terminal blocks: <http://go2adc.com/tb-ps>



### Relays and Timers

Relays have been the traditional building blocks of control since the 1950s. Still in wide use for simple control or power conversion, styles include electro-mechanical general or special purpose relays such as high power or hazardous location styles, as well as solid-state relays.

- Electro-mechanical relays
- Intrinsically safe relays
- Phase monitoring relays
- Alternating relays
- Optocoupler relays
- Pump seal failure relays
- Voltage monitoring relays
- Slim interface relays
- Power relays
- Solid state relays
- Hazardous location relays
- Timer relays
- Multi-Function Digital Counter / Timer / Tachometers
- Force-guided relays

**GO!** <http://go2adc.com/relays-ps>



### Cut to length cables

All of our cable is available cut to your specified length so you can eliminate waste and purchase only what you need - **plus it's cut for free and shipped FAST!!**

- Power cables
- Tray-rated cable
- Control and signal cable
- Instrumentation cable
- Data communications cable
- Food and beverage (FDA approved) cable
- Variable frequency drive (VFD) and servo motor cable
- Thermocouple and RTD extension wire/cable

**Minimum lengths of 10ft unless otherwise indicated**

**NO CUT CHARGES**

**CUT TO LENGTH CABLES**



### Bulk Electrical Hook-up/Building Wire

AutomationDirect has a large selection of quality electrical wire in pre-spoled lengths that meets all NFPA and NEC requirements at great prices.

- MTW machine tool wire
- TFFN fixture wire
- THHN general purpose building wire
- AWM appliance wire
- DLO power cable

**GO!** <https://go2adc.com/bulk-ps>





# Shop online at [www.AutomationDirect.com](http://www.AutomationDirect.com) . . .



- **It's easy to find what you need**
- **Get a quote in seconds**
- **Secure server**
- **Order using your form of payment**  
We accept approved purchase orders, major credit cards (MasterCard, Amex, Discover, VISA), and PayPal.
- **Automatic e-mail order confirmation**
- **Order tracking**
- **Web site help**

Unlike some other e-commerce companies, be assured that you can contact us if you need help using our Web site. Call 1-800-633-0405, or email us at [store@automationdirect.com](mailto:store@automationdirect.com) with questions. Also, our "Site Help" page, [www.AutomationDirect.com/help](http://www.AutomationDirect.com/help), has an extensive list of useful tips and links.

- **Take the entire catalog with you**  
Our entire set of catalogs are online in searchable PDF format and you can download them to view it anywhere, any time. [www.AutomationDirect.com/PDFcatalog](http://www.AutomationDirect.com/PDFcatalog)

**Need help choosing the correct parts for your next project?**  
**We can help: we have online product selectors for many product families**

## Online Selector Tools



PLC Selector

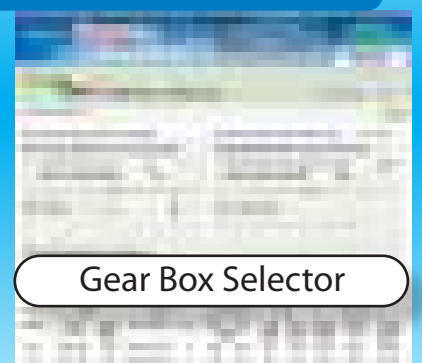


Stepper System Selector

**GO!** <http://go2adc.com/choose-ps>



WERMA Stack Light Configurator



Gear Box Selector



# Over 1,400 FREE videos one click away!

<http://go2adc.com/videos-ps>

At AutomationDirect we believe in helping you learn about our products quickly and easily. With hundreds of topics to choose from, our video library lets you learn at your convenience.



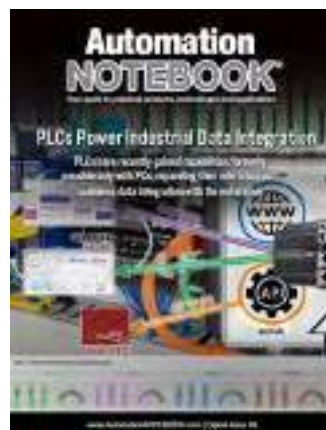
Visit: [community.automationdirect.com](http://community.automationdirect.com) for forums, resource information and more



## Learn more at our FREE online library

<http://go2adc.com/library-ps>

Visit our FREE online library and learn about new products, download FREE e-books, peruse the latest edition of Automation Notebook magazine (an industry favorite for over a decade) or sign up for our FREE newsletter. The library's technical articles provide knowledge and insight on all aspects of industrial control system design and application.



## Get Social with AutomationDirect

 Join us on LinkedIn  
<https://www.linkedin.com/company/automationdirect>

 Like us on Facebook  
<https://www.facebook.com/AutomationDirect>

 Follow us on Twitter  
<https://twitter.com/AutomationDirect>

 Watch us on YouTube  
<https://www.youtube.com/AutomationDirect>





## The best values in the world . . .

We've shopped around to bring you the most practical industrial control products that are in-stock, ready to ship and at the right prices!

### Hayk in CLAREMONT, CA:

"Competitive prices on most of the selection. Easy to order on the web, no sales rep or middle man needed."

### Jack in GILLSVILLE, GA::

"Great customer service, tech support, shipping and delivery. Using Automation Direct removes the need to carry a lot of inventory."

### THandley in MIDLAND, TX:

"We have been using Automation Direct for close to 15 years if not more. They have never failed to deliver as promised. Whether its getting a small part sent to one of our job sites along the east coast or overnighting a VFD to our jobsite in Fresno or Oxnard California you can rest assured it will be there when they say it will be there. This has made me a repeat customer for life."

### Todd in MEMPHIS, TN:

"I have been pleased with the service and products for several years. Have only had a couple occasions with a need to speak to customer service and it was always handled promptly and efficiently. The products available, delivery and service keeps me coming back."

### Henry in LABELLE, FL:

"Over 12 years ago, installed a network of twelve DL06's communicating via H0-ECOM 100 modules throughout our plant, saving thousands of feet of wire previously needed for control wiring. It has allowed the operation and monitoring of pumps, conveyors, and other equipment from multiple locations. More recently, added more control stations using C-MORE touch panels, instead of physical switches and pilot lights. All this has resulted in tremendous savings, safety, ease of troubleshooting, and flexibility. Thank you AD for affordable products, great help with tech support, reasonably (and often free) software and good quality products."



A quality product line, with FREE top-rated technical support and fast shipping!

See all our company reviews:  
<http://go2adc.com/reviews-ps>

Call 1-800-633-0405 or visit us at:  
[www.AutomationDirect.com](http://www.AutomationDirect.com)